

www.velebit-promet.hr

www.tanta.agency



our team for your special cargo

TANTA

velebit

velebit - Promet d.o.o. Industrijska 5, 10370 Dugo Selo, Croatia

Tanta d.o.o. Ankarska cesta 5c, 6000 Koper, Slovenia



serving the world

8 REASONS & more to work with us

ASK THE EXPERTS
We will find the best solution

GOING SMOOTHLY
How to feel safe

Yes, we do all that!

Worldwide heavy & project cargo solutions / Worldwide project chartering & brokerage / Consultancy & project cargo expertise / Multimodal project management / Port agency service / IMO Cargo logistics / Marine surveys and transport engineering

LIBURNIA MARITIME AGENCY V. C. Emina 3, 51410 Opatija, Croatia

liburnia@liburniamar.hr www.liburniamar.hr

f in

WHAT WE DO

Worldwide heavy & project cargo solutions • it is in our blood

Worldwide project chartering and brokerage • our solutions are optimized

Project forwarding & turnkey transport solutions

• understanding the industry

Industrial relocation & salvage

• excellence in complexity

General forwarding: container logistics, rail, road & air transportation, custom clearance, warehousing, port operations

• standards at the highest level

Consultancy and project cargo expertise • foreseeing clients' needs

IMO Cargo logistics • respectively regulated

Port agency service in all Croatian, Slovenian, Montenegrin and Albanian ports • smooth operations

Working boat, yacht and ship transportation • tailor made solutions

Marine surveys and transport engineering • focusing on what is important

Men at work • hard work looking good

BACKTOBLU • we care about a healthy environment

Content and photographs: **LIBURNIA MARITIME AGENCY**
Cover and Environment topic: Shutterstock / Printing house: GZH, Zagreb, Croatia



ASK THE EXPERTS

SIMPLIFYING COMPLEX PROJECTS

WORLDWIDE Heavy & project cargo solutions

Transportation of oversized cargo and industrial projects worldwide, independent ship brokerage & chartering for project, break bulk and heavy cargo. Full control of the cargo from its origin to its destination

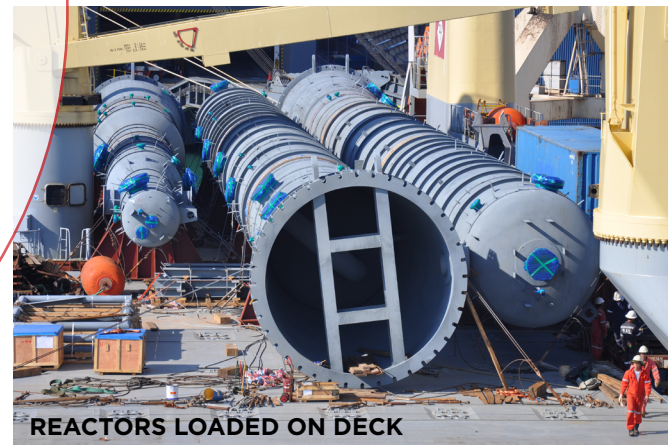


CHOOSE THE BEST - CHOOSE LIBURNIA!

With today's technology we have all kind of information at our fingertips. In our work, this makes things a bit dangerous and can affect important decisions in a completely wrong way. Our role is to filter it all and provide only the relevant and reliable information to our clients. We are not here only to provide the cheapest possible rates, however, even more important is that we are here to investigate all the options, negotiate carefully, advise and follow operationally until the job is smoothly executed. We take proper care of all of our client's interests, and never leave them exposed to any kind of risk. Our part of the job is to ensure the fluent flow of trade for our clients... With Liburnia, they feel safe, confident in our support, and free to run their own core business, while we take the best care of their valuable cargo.



LPC NETHERLANDS
LOADING STORAGE TANK



REACTORS LOADED ON DECK



ROAD TRANSPORTS ARE ALSO OUR SPECIALTY BEING THE OWNERS OF VELEBIT PROMET



LOADING OF TRANSFORMERS. WE HAVE LOADED MORE THAN 1500 UNITS IN THE LAST 18 YEARS FOR MANY DESTINATIONS WORLDWIDE. WITH AN INDEPTH KNOWLEDGE OF THE TRANSFORMERS INDUSTRY AND THE PRODUCT ITSELF, WE CAN PROUDLY SAY THAT OUR CLIENTS ALWAYS HAVE WORKABLE AND COMPETITIVE SOLUTIONS FROM THE LIBURNIA TEAM.

WE CAN DO IT ALL

RIGHT SHIP AT THE RIGHT TIME - AT THE RIGHT PRICE

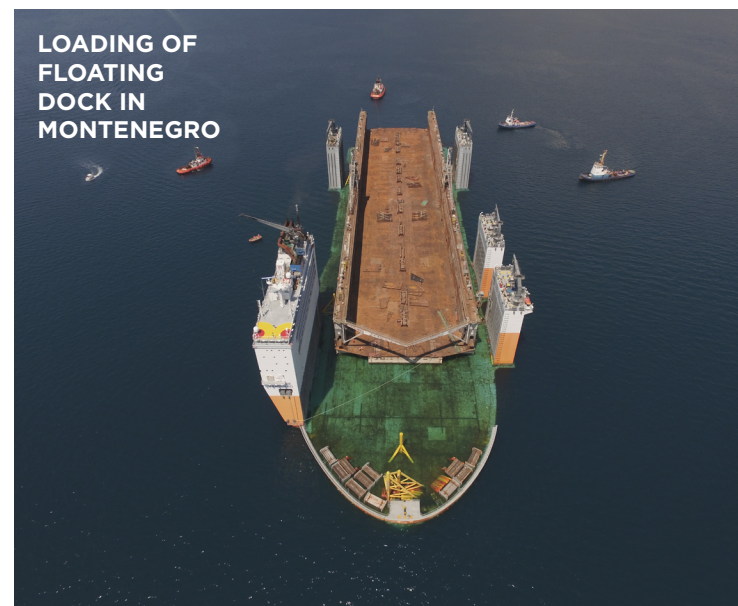
WORLDWIDE Project chartering & brokerage

Deep sea and coastal
chartering with extensive
knowledge of vessel types,
trades, contracts, ports,
market fluctuations.



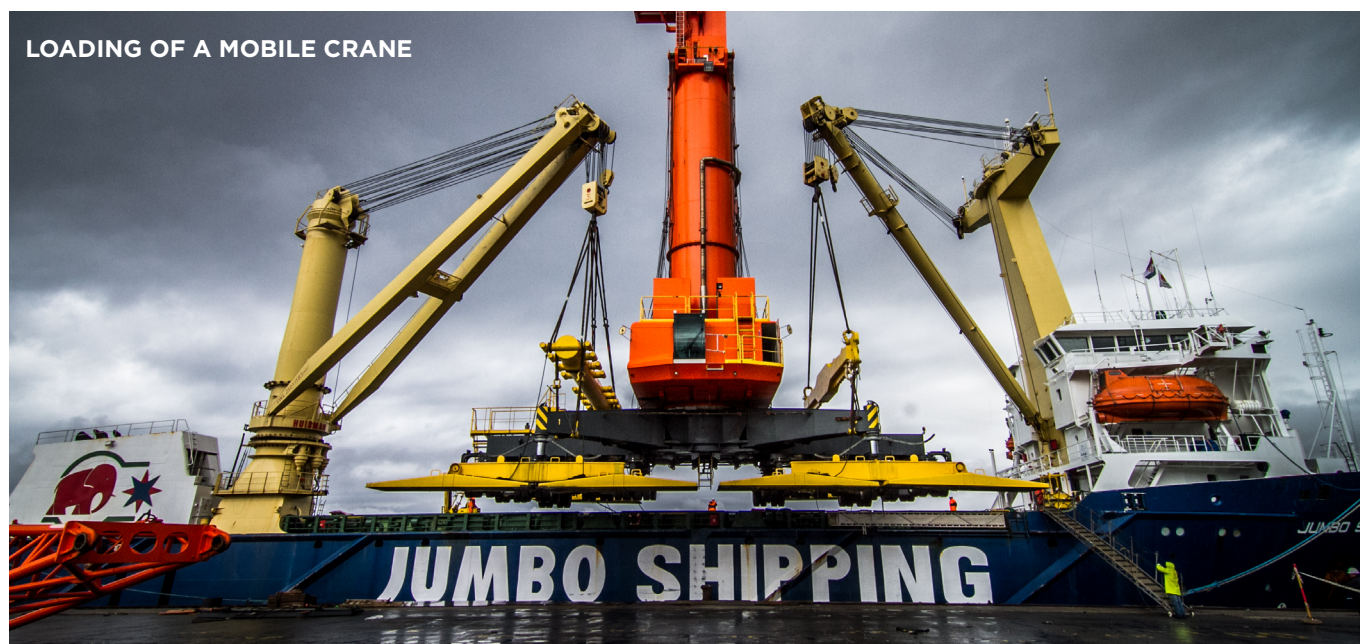


WASTE TO
ENERGY DOOR
TO DOOR
PROJECT



LOADING OF
FLOATING
DOCK IN
MONTENEGRO

Shipping market is very volatile and we have to be focused all the time in order to provide the best solution for our clients. During project implementation, a wrong indication can result in negative contract outcomes. Our solutions are **realistic, competitive, adjusted, and optimised for the individual needs of each client** and presented only after careful examination and with a deep understanding of the whole process.



LOADING OF A MOBILE CRANE



TRANSFORMER BEING LOADED IN THE PORT OF RIJEKA

ALL DONE

SAFE IN OUR HANDS

Understanding the industry needs, best routes, ports, ways of manipulation, knowing the cargo itself, being focused to help the clients to decide what they really want. Take the risk!

Project forwarding
& turn-key
transport
solutions



LPC NETHERLANDS
SHIPPING TWO
MOBILE HARBOUR
CRANES



LPC NETHERLANDS
LOADING
SECTIONS



DELIVERY OF TWO
COKE CHAMBERS,
115 METRIC
TONS EACH. A
COMBINATION OF
SEA, RIVER AND
ROAD TRANSPORT
INCLUDING
CONSTRUCTION
WORK



LASHING
OPERATIONS ON
TRANSFORMER
ACCESSORIES
LOADED INTO
THE HOLD

Leveraging our extensive experience in maritime transportation, salvage techniques, and project management, we offer comprehensive solutions tailored to the complexities of industrial relocation and salvage endeavors. **From coordinating the movement of heavy machinery to navigating regulatory requirements and salvaging valuable assets, our team ensures efficient and timely relocations while minimizing disruptions to operations.** With a commitment to precision, safety, and environmental stewardship, we streamline the process from start to finish, providing peace of mind to our clients.



GOING SMOOTHLY

General forwarding

Container logistics,
rail, road &
air transportation,
custom clearance,
warehousing, port
operations

BOILERS LOADED ON FLAT RACK CONTAINERS AND SAFELY LASHED



OUR TEAM ATTENDING THE OPERATIONS. WE ALWAYS FOLLOW ALL THE STEPS OF THE PROJECT CLOSELY TO ENSURE THE QUALITY OF WORK AND SMOOTH PROGRESS



LOADING PIPES IN THE PORT OF KOPER



AIRPORT FINGERS ROAD TRANSPORT WITH VELEBIT - PROMET FOR THE ZAGREB AIRPORT

IMO cargo logistics

The carriage of dangerous goods and marine pollutants in sea-going ships is respectively regulated. Our specialized team strictly follow all the protocols for IMO cargo handling and is very experienced in offering IMO consulting.

Once an ISO tank has been tagged for food it can no longer be used for other types of cargo. The same goes for ISO tanks tagged for chemicals. This is to prevent contamination risk. Once an ISO tank has been tagged for chemicals, the type of chemical it can transport next depends on the three previous chemicals transported.



LEAVE IT TO US

Port agency service

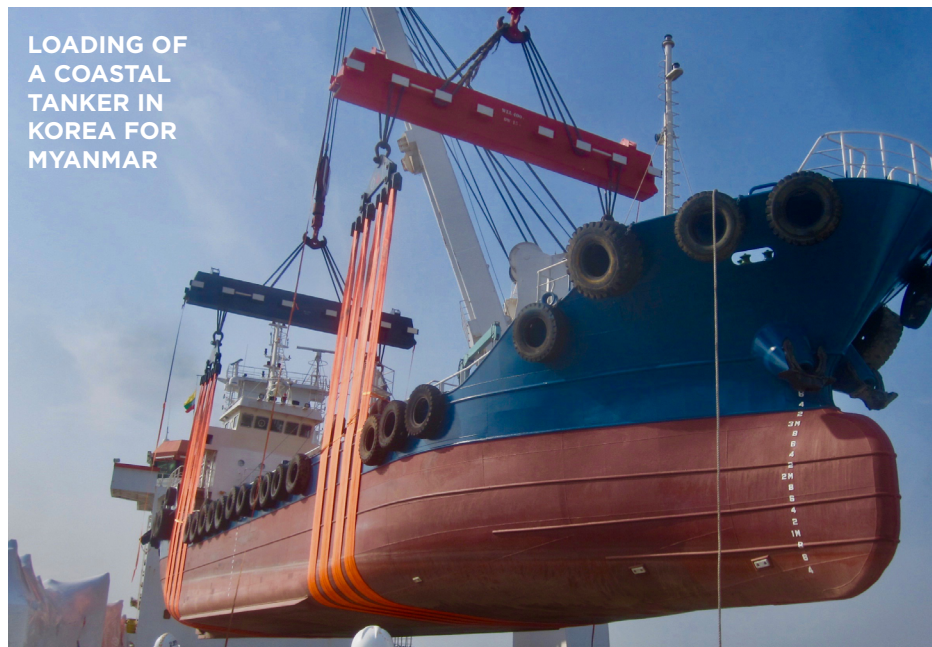
in all Croatian, Slovenian,
Montenegrin & Albanian ports

A good agent can save a significant amount of money for the owner. Our agency standards are at the highest level and our staff has the necessary experience to arrange a smooth and efficient call.

HEAVY LIFTER ANNA SAILING OUT FROM THE RIJEKA PORT

T ransportation of working boats, yachts & ships

Our solutions are tailor made. The type of boat, dimensions, shape of the hull and mobility itself, will have a direct impact on the best transport option. In the recent years yacht shipping has become an increasingly popular option for many owners. There's probably no other cargo with as many hidden surprises. This is where we see the importance of an experienced company that knows how to adapt to every situation! Simply – choose Liburnia!



LOADING OF
A COASTAL
TANKER IN
KOREA FOR
MYANMAR

Whether you want to move your boat to a different area, or you are looking for a vessel on the global market (fluctuations in foreign currency exchange rates may make prices in some countries more favourable than those for vessels in local waters) boat delivery is a thriving industry across three main modes – transport on a ship, delivery by road, and sailing under its own steam.

SHIPPING IS A GROWING PART OF THE BOAT DELIVERY SCENE AND THERE IS ALMOST **NO LIMIT TO THE SIZE** OF THE BOAT THAT CAN BE TRANSPORTED THAT WAY



LOADING A FISHING BOAT IN RIJEKA FOR EGYPTIAN BUYERS



WE OFFER LASHING AND
SECURING SOLUTIONS
ACCORDING TO HIGHEST
STANDARDS AND ALWAYS
CONTROLLED BY
CERTIFIED SURVEYORS

Consultancy & project cargo expertise

Liburnia is always trying to foresee the needs of its clients and look for ways to reduce risks in the every stage of transportation. We have been investing in the education of our personnel for years and today we can send our technical staff anywhere to follow the cargo and to provide the same constant care and attention. We are not only following cargo operations, but also arranging the smooth calls of vessels, as well as suggesting and planning operations with other parties involved in the process. This approach reduces costs and makes our clients happier!

CARGO IS LOADED UNDER THE SUPERVISION OF OUR SURVEYORS

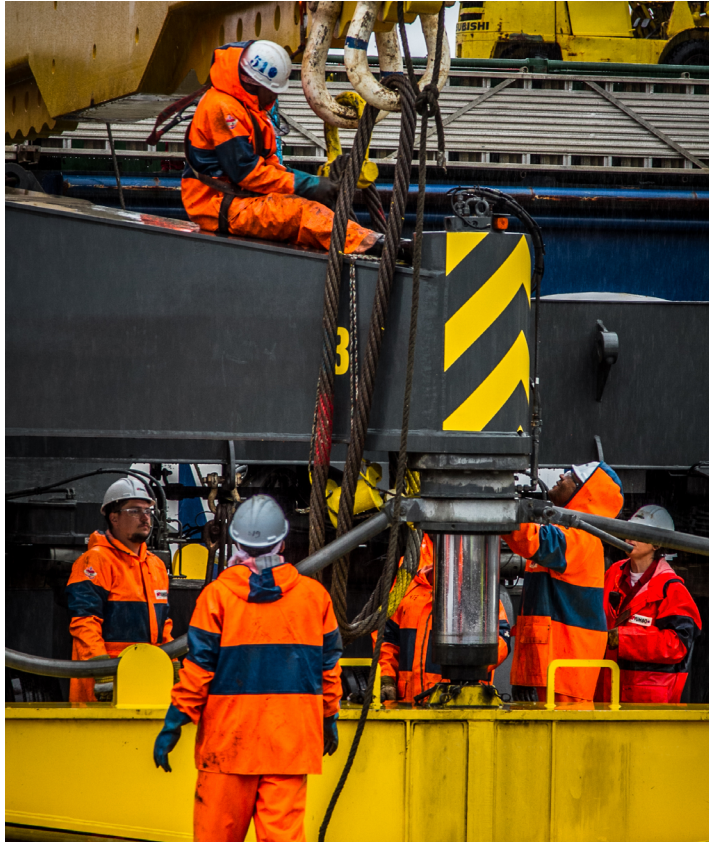
WE ARE INTO IT

WE LOVE OUR JOB

Marine surveys & transport engineering

In house knowledge and experience
always welcomed by the clients.

SITE MANAGEMENT IN INCHEON, KOREA
WHERE OUR TEAM MANAGED AND
SUPERVISED THE INSTALLATION OF LIFTING
LUGS ON THE DECK OF THREE TUGBOATS.
THE DESIGN OF THE LUGS WAS ALSO IN OUR
SCOPE! ALL WORK HAS BEEN APPROVED
AND CERTIFIED BY THE KOREAN REGISTER
AND MARINE WARRANTY SURVEYORS

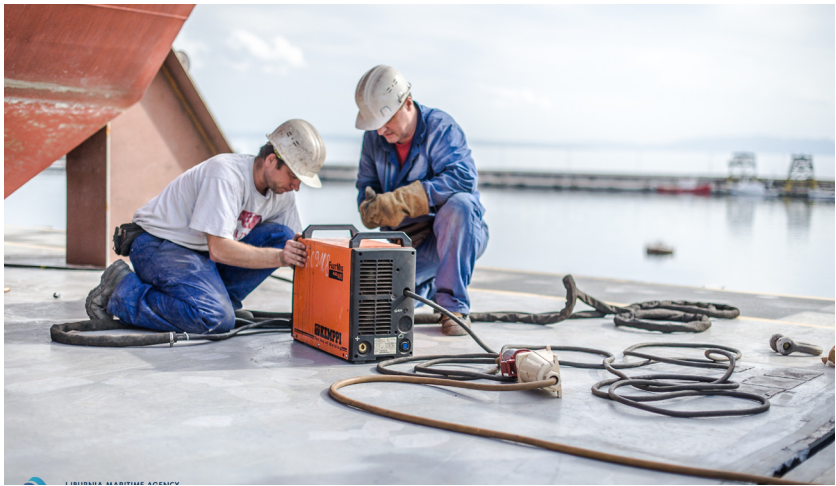


Men at work

Behind all the success and joy, there is always hard work. And it looks good!



ARTISTIC VIEW



WE ARE GOING BACK TO BLU[®] ARE YOU?

WE'RE GREEN. AND BLUE.



BACKTOBLU

Maritime industry generates many negative impacts on the environment; air pollution from gas emissions, and sea pollutions from ballast water, oil and chemical spills.

Eventually, negative impacts have been reduced adopting MARPOL, the International Convention for the Prevention of Pollution from Ships, and additionally by the International Maritime Organisation (IMO) which provides various instruments to protect the marine environment from shipping activities.

Marine pollution is a combination of chemicals and litter, washed or blown into the ocean from land sources. This pollution poses dangers to both humans and animals. Marine trash encompasses all manufactured products and most of them are plastic items like shopping bags and beverage bottles, along with bottle caps, food wrappers, cigarette butts and fishing gear.

Plastic waste is particularly problematic due to abundance and resistance to degradation. Once plastics break down into micro-plastics and drift throughout the water column in the open ocean, they are virtually impossible to recover.

Solutions for marine pollution include prevention and cleanup. Raising awareness and changing society's approach to single-use plastic is a long and economically challenging process.

Liburnia Maritime Agency launched BACKTOBLU foremost to raise awareness, thus encourage behavioural change towards the environment. The initiative aims to alter consciousness towards environmental issues by informing, educating and engaging audience to action.

Bringing the issue of environment pollution to the forefront, we'll inspire behavioural change through

- social media content (facebook, instagram, LinkedIn) - staying up to date on environmental news, sharing content about threats & promoting advices for behavioural changes
- donations for environmental NGO's (profits from sales of BACKTOBLU items)
- various projects & case studies (collaborations with scientific and educational institutions)
- educations (during our company events, in other companies, organisations, schools and faculties)
- ZERO WASTE brochure (www.backtoblu.com/zero-waste-brochure/)

Being a part of the maritime industry, which has a major impact on environmental pollution, carries certain responsibilities and make us strive to spread consciousness and foster solutions to prevent further development of adverse effects on humans and the environment...

EIGHT MILLION
METRIC TONS OF
PLASTIC IS DUMPED
INTO THE OCEANS
EACH YEAR. IT IS
BELIEVED THAT BY
2050, OCEAN PLASTIC
WILL OUTWEIGH
ALL OF THE
OCEAN'S FISH

SMALL ANIMALS ABSORB THE CHEMICALS AS PART OF THEIR FOOD, THEN ARE EATEN BY LARGER ANIMALS. THAT INCREASES THE **CONCENTRATION OF CHEMICALS**, SO ANIMALS AT THE TOP OF FOOD CHAIN HAVE CONTAMINATION LEVELS MILLIONS TIMES HIGHER THAN THE WATER IN WHICH THEY LIVE

WANT TO SUPPORT OUR WORK?

Buy something that is not a single – use product! Proceeds from the sales of BACKTOBLU items support our important work and projects!

BACKTOBLU collection was created to fund our work, to build our movement against plastic pollution, and support our projects. By buying our merchandise, you help us spread awareness about the harmful effects of single-use plastics and ocean pollution!

Wear our t-shirt and help us spread awareness about harmful effects of single - use plastics and ocean pollution!

For inquiries please contact us:

marketing@liburniamar.hr or by phone:
+385.51.703.540

www.backtoblu.com